



Navigating the  
LISO:  
Empowering  
Inclusion in  
Manchester  
Schools

# What is the Local Inclusion Support Offer

As part of the Change Programme Partnership, Manchester City Council is piloting a new Local Inclusion Support Offer (LISO). This initiative is designed to provide a holistic package of support to mainstream schools, drawing on the expertise of our specialist services to strengthen inclusive practice and improve outcomes for children and young people with SEND.

The LISO aims to support schools through:

**Training:** Building and expanding on the training already available, setting staff will be upskilled in identifying and meeting a broad range of needs.

**Advice:** Access to expert guidance and inclusive problem-solving approaches.

**Direct Delivery:** Delivery of SEND support at both group and individual levels.

# Contents

## Training/Universal

- Manchester Inclusion Toolkit
- Ordinary Available Toolkit
- Family Hubs
- Parent Carer Groups
- Local Offer Newsletter & Drop ins
- SENDIASS
- Manchester Virtual School
- LISO training offer
- Dingleys Promise
- Manchester Healthy Schools

## Advice and Direct Delivery

- Specialist Outreach Teams
- Early Years
- Inclusive Learning in Mainstream Primary
- Supporting pupils with SEMH Needs
- Medical and Mental Health Needs Support
- Sensory Support Services
- Supporting Pupils with Medical Conditions and/or Physical Disabilities
- Supporting pupils with Autism or on the Social Communication Pathway
- Targeted Support
- Occupational Therapy
- Speech and Language Therapy (SaLT)
- Social Communication Pathway

## Targeted Support Initiatives

- Flying start
- Neurodiversity in Education

# Manchester Inclusion Toolkit

## Inclusive Education Strategies

The toolkit offers practical strategies for differentiation and scaffolding to support all pupils' meaningful engagement.

## Audit and Improvement Tools

Schools can use the toolkit to audit inclusive practices and identify areas for development and strengths.

## Embedding Inclusive Values

Embedding inclusion across the curriculum fosters a culture of acceptance, wellbeing, and academic success.

## Target Users and Compliance

The toolkit supports SENCOs, inclusion leads, and teachers in enhancing provision and meeting SEND frameworks.

[Click here to access: Inclusion Toolkit](#)



# Ordinarily Available Provision

Ordinary Available Provision provides a comprehensive guide to what schools should be offering to ensure they are creating an inclusive environment.

The three documents; Manchester Early Years Ordinarily Available Provision, Manchester Primary Ordinarily Available Provision and the Greater Manchester Ordinarily Available and Inclusive Provision provide a framework for schools to follow to ensure they are truly inclusive.

The Greater Manchester Ordinarily Available and Inclusive Provision also provides an audit tool that can be used to identify strengths and areas for development



MANCHESTER  
CITY COUNCIL

**GMCA** GREATER  
MANCHESTER  
COMBINED  
AUTHORITY

[Click here to access: Ordinarily Available Provision](#)

# Family Hubs



## **Support for SEND Families**

Family Hubs offer tailored support to families with children who have SEND, ensuring inclusive support services.

## **Collaboration with Schools**

Schools refer families to hubs for parenting help, early support, and community involvement to boost wellbeing and attendance.

## **Community Engagement and Events**

Joint events and drop-in sessions foster strong community ties and provide accessible family support in local areas.

## **Strategic Hub Locations**

Hubs in Longsight, Crosssacres, Woodville, and Sacred Heart serve diverse communities across Manchester effectively.

## **Family Hubs | Help & Support Manchester**

# Parent Carer Groups

## Peer Support and Advocacy

Parent Carer Groups provide essential peer support and advocacy for families of children with SEND, empowering parents.

## School Collaboration

Schools can enhance support by signposting families to parent carer forums and involving groups in school SEND events.

## Improved Communication

Engagement with parent carer groups fosters trust, shared decision-making, and better understanding of family needs.



[Click here to access: Parent Carer Groups](#)

# Local Offer Newsletter & Drop-ins

## **Regular Updates via Newsletter**

The newsletter offers ongoing updates on SEND services, events, and consultations to keep schools informed.

## **Engagement Through Drop-ins**

Drop-in sessions facilitate direct interaction between school staff and SEND service providers to gather insights and ask questions.

## **Informing SEND Development**

Information from newsletters and drop-ins supports schools in updating their SEND development plans and policies.

## **Enhancing Responsiveness**

Integrating updates improves schools' responsiveness and alignment with local SEND priorities and initiatives.

[Click here to access: Local Offer Newsletter](#)



# SENDIASS

## **Free, Confidential, Impartial Support**

SENDIASS Manchester offers free, dedicated, confidential, and impartial support for children, young people, and parents/carers.

## **Comprehensive SEND Guidance**

Advice covers education, health, and social care where linked to SEND, including EHCPs, mediation, exclusions, and complaints.

## **Empowering Families**

The service helps families understand legal processes, prepare for meetings, and make informed decisions.

## **Training and Resources**

SENDIASS provides workshops, factsheets, podcasts, and online training to support SEND understanding.

[About SENDIASS Manchester](#)



# Manchester Virtual School

## **Championing Education for Vulnerable Learners**

Manchester Virtual School supports the education, employment, and training of children in care and other vulnerable young people.

## **Child-Centred Approach**

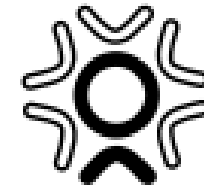
The school's ethos is rooted in Manchester's Inclusion Strategy, ensuring every child feels a sense of belonging, respect, and value.

## **Personal Education Plans (PEPs)**

PEPs are co-developed by Designated Teachers, Social Workers, and carers to ensure tailored educational support for each child.

## **Multi-Agency Collaboration**

The Virtual School works with education settings and services to reduce exclusion risks and promote positive outcomes.



**Manchester  
Virtual School**

[Click here to access: Manchester Virtual School](#)

# LISO Training Offer

## Professional Development Opportunities

LISO offers CPD sessions that build staff capacity to support inclusive education and SEND learners effectively.

## Support for SEND Strategy

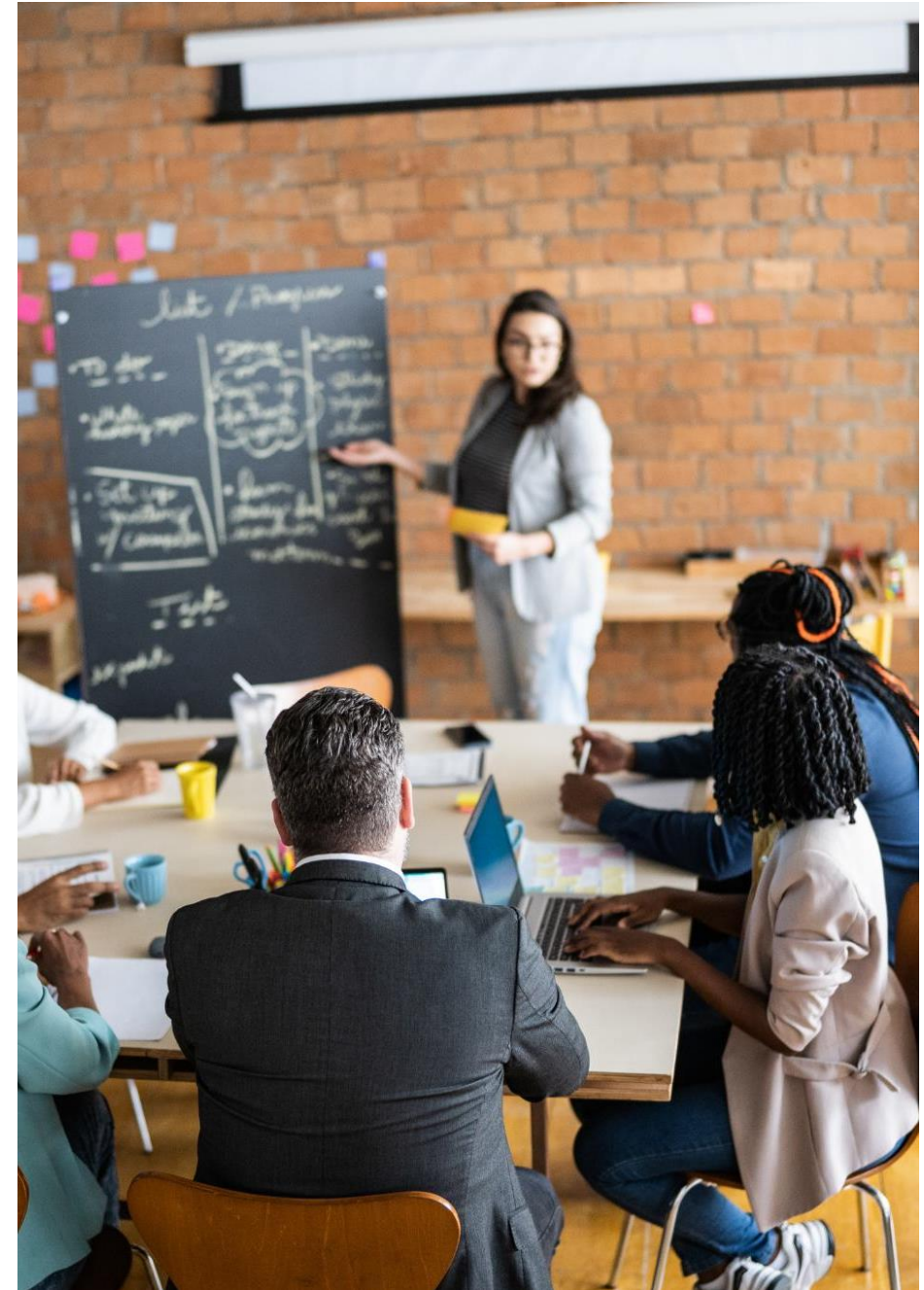
Training informs SEND strategy, provision mapping, and classroom practices to better meet diverse learner needs.

## Collaborative Learning

Sharing learning across teams embeds inclusive principles throughout the school community for continuous improvement.

## Accessible Training Formats

The 2025–26 training calendar offers diverse topics and formats to suit different school contexts and needs.



# Dingley's Promise Training

## **Inclusive Early Years Practice**

Dingley's Promise offers flexible online training designed to help early years professionals support children with SEND more confidently and inclusively.

## **Practical, Hands-On Courses**

Courses cover topics such as inclusive practice, transitions, behaviour, communication, and leadership – built around real-world scenarios and strategies.

## **Empowering Professionals**

The training helps build skills, confidence, and reflective practice, enabling staff to better meet the needs of children with SEND in their settings.

[Click here to access: Dingley's Promise Training](#)



# Manchester Healthy Schools

## **Health Improvement for All Learners**

The Healthy Schools team supports over 180 schools to promote health and wellbeing, including tailored support for pupils with SEND.

## **Dedicated SEND Practitioner**

A specialist health improvement practitioner works directly with schools to embed inclusive health education and address SEND-specific needs.

## **Whole-School Approach**

Schools receive bespoke action plans that reflect the needs of their communities, ensuring SEND is integrated into health priorities.

## **Multi-Agency Collaboration**

The team liaises with services such as CAMHS and the Healthy Child Programme to provide joined-up support for children with SEND.

[Click here to access: Manchester Healthy Schools](#)



# Specialist Outreach Teams

# Support and advice service for children aged 0 – 5

Rodney House Specialist Support School and Outreach Service

## **Training and Support**

develop skills of Early Years settings to include children with disabilities and/or special educational needs and empower Early Years practitioners to support children with disabilities and/or special educational needs

## **Regular Networks**

deliver termly Early Years SENCO Networks covering a range of topics and updates to support EY SEND practice

## **Support for Families**

Through working with parents/carers to develop their children's learning schools and work alongside appropriate professionals to support successful transitions

## **Support for Early Years Settings**

Work with the child's key worker and SENCO to create a plan and facilitate further progress and guidance to meet the needs of the child.



[Click here to access: RHOSEY](#)

# Inclusive Learning in within Primary Mainstream Settings

## Tailored Inclusive Support

Outreach teams provide a tiered approach offering Training, Advice and direct delivery to promote inclusive learning in mainstream primary schools.

## Area Team Distribution

Teams are regionally distributed across Manchester to better serve local schools and communities with specialized expertise; South – [Ashgate](#), Central – [Birches](#), North – TBC

## Expertise in Complex Needs

Teams offer expert guidance in managing complex needs and implementing effective inclusive practices for pupils with SEND.

## Enhancing School Capacity

Collaboration with outreach teams helps schools reduce learning barriers and improve outcomes for all learners.





# Supporting Pupils with SEMH Needs

## **SEMH Support Services**

Schools access SEMH advice via referral forms and collaborate through solution circles to address challenges.

## **Outreach Services**

City of Manchester Learning Partnership linked with Bridglea and Manchester PRU offer training and targeted outreach for pupils with SEMH needs

## **Transition and Reintegration Planning**

Outreach services assist schools in planning personalised transitions and reintegration for pupils with SEMH .

[Click here to access: SEMH Outreach Support](#)

# Medical and Mental Health Needs Support

## EBSA Support Services

Schools can access EBSA advice through the coproduced 'planning for change' tool and regular solution circles creating opportunities to collaborate and address challenges.

## Outreach Services

Manchester Hospital School offer outreach for pupils with medical or mental health needs which are impacting on their ability to engage in education

## Virtual Learning

Manchester Hospital School coordinate the use of AV1 robots to allow pupils to access the classroom virtually. [AV1 Robots – Manchester Hospital School](#)

[\*\*Click here to access: Manchester Hospital School\*\*](#)





# Supporting Pupils with Medical Conditions and/or Physical Disabilities

## **Inclusive Support for Schools**

Lancasterian Outreach and Inclusion Service (LOIS) provides advice, support and training to mainstream primary and secondary schools to meet the needs of pupils with medical conditions and/or physical disabilities.

## **Access and Participation**

The service ensures pupils can access the physical school environment, engage with the curriculum, and be fully included in all school activities.

## **Specialist Training and Assessment**

LOIS offers moving and handling training and supports early years settings through seating and equipment assessments.

[Click here to access: LOIS Overview](#)

# Sensory Support Service

## Assessment and Advice

Schools can request assessments and receive expert advice to adapt learning environments for sensory needs.

## Staff Training

Training for school staff on sensory-friendly strategies improves support for pupils who are Deaf, have hearing needs or vision impairments.

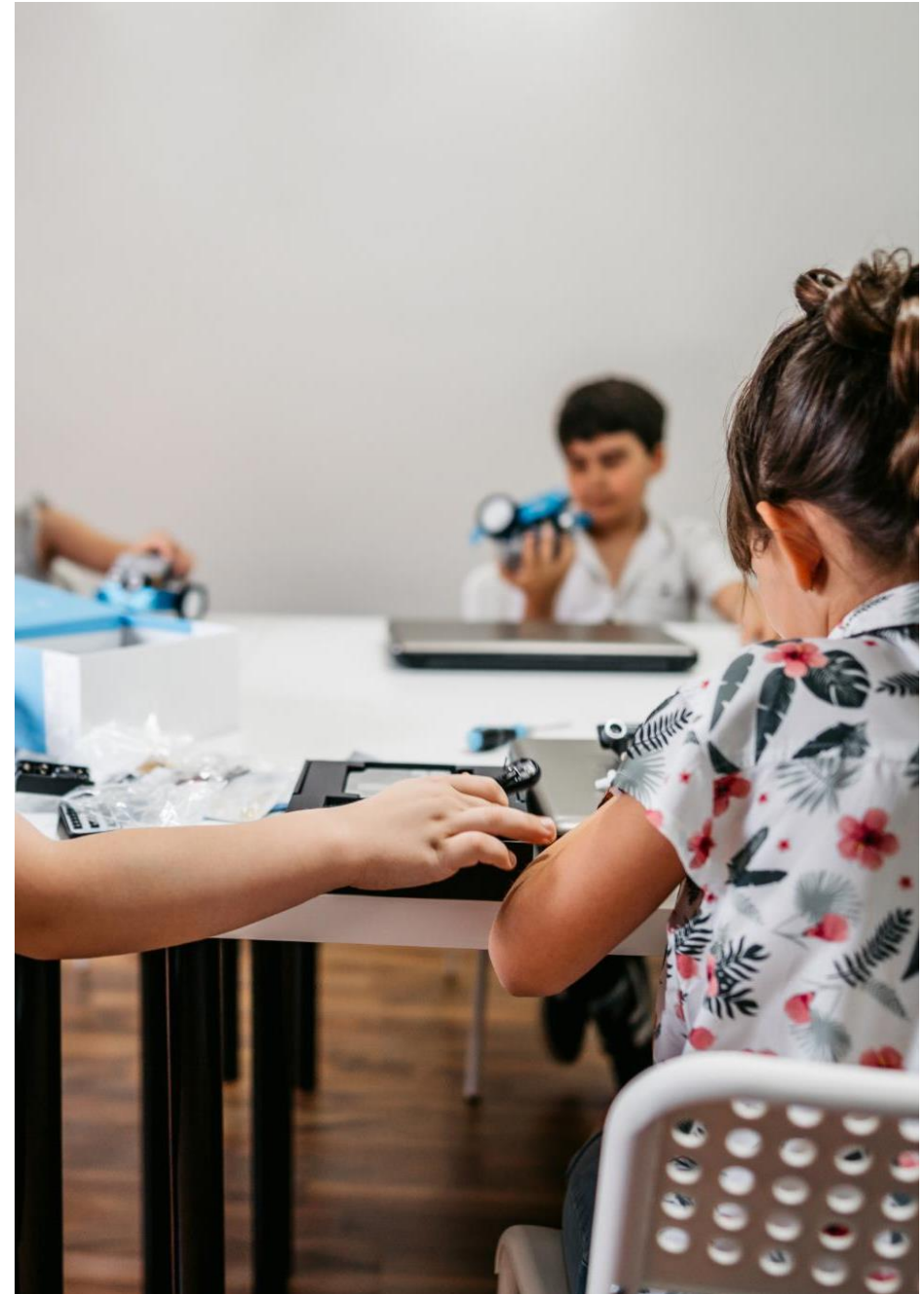
## Inclusive Classroom Accommodations

The service helps implement accommodations that create accessible classrooms fostering sensory development and participation.

## Promoting Equity in Education

Supporting pupils with sensory impairments removes learning barriers and promotes equity and inclusion in schools.

[Click here to access: Sensory Support Service](#)



# Supporting pupils with Autism or on the Social Communication Pathway

## Specialised Outreach Support

Grange School Outreach provides targeted support for pupils on the autism spectrum and social communication pathway.

## Training and In-Reach Opportunities

Schools can access in-reach visits, virtual consultations, and expert-led training sessions covering topics such as EYFS, curriculum design, structured environments, communication, and sensory processing.

## Building Capacity in Schools

The Outreach Team helps schools develop autism awareness and implement autism-specific approaches to meet the needs of autistic children and young people.



[Click here to access: Grange Outreach Support](#)

# Occupational Therapy Services

## **Service Purpose and Goals**

The OT service supports children with physical, sensory, and cognitive challenges to improve participation in daily activities.

## **Holistic and Family-Centred Approach**

The service collaborates with families, schools, and professionals for tailored interventions promoting independence and development.

## **Resources and Tools Provided**

The Occupational Therapy First Response Padlet provides schools resources to guide their interventions when helping children to develop their motor skills, activities of daily living and attention and concentration.

## **Referrals**

Referral information can be found on the padlet

Occupational Therapy First Response Padlet



# Speech and Language Therapy (SaLT)

## Supporting Communication Development

The Speech and Language Therapy (SALT) service helps children develop understanding and use of language through everyday routines.

## Workshops and Resources

Workshops provide practical strategies for parents and carers to support language development using objects, visuals, and routines.

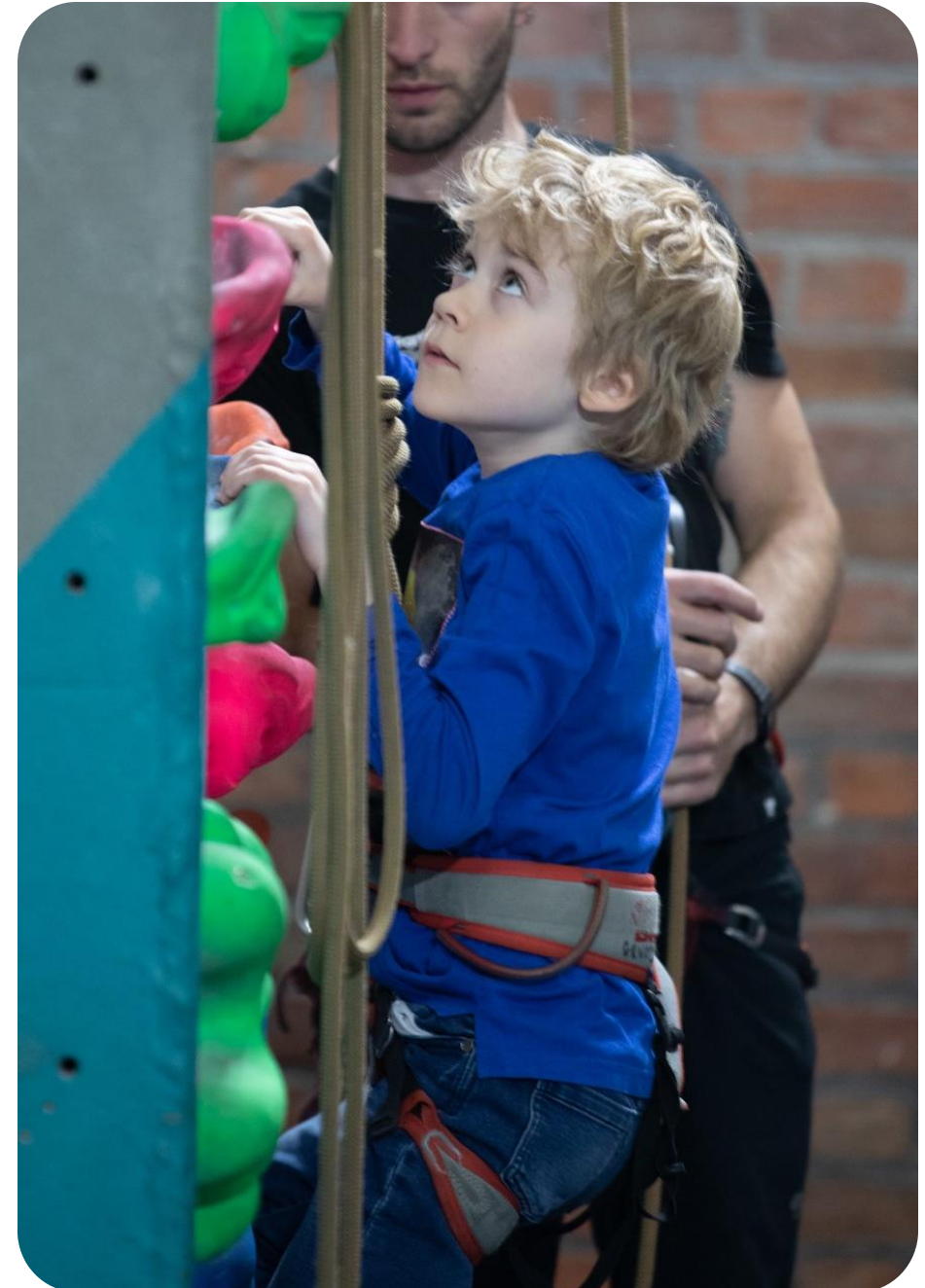
## Collaborative Support

Therapists work with families and schools to embed communication strategies and improve outcomes for children with speech and language needs.

## Referrals

Referral information can be found on the padlet

Click here to access: [Speech and Language Therapy Workshop](#)



# Social Communication Pathway

## Specialist Support for Neurodivergent Pupils

The Social Communication Pathway provides structured resources and guidance for supporting pupils with autism and related social communication needs.

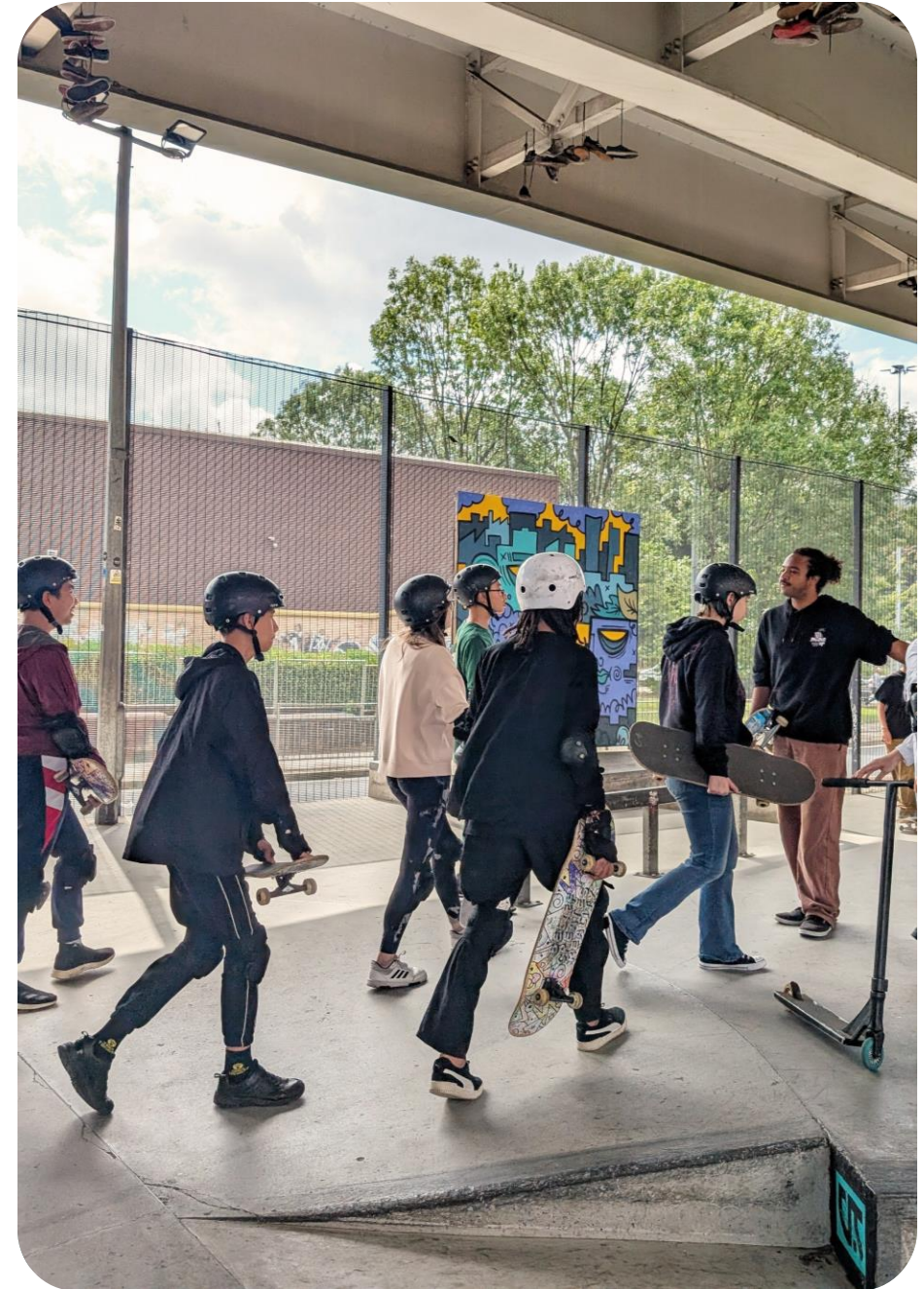
## Practical Tools and Strategies

Schools and families can access visuals, social stories, sensory strategies, and structured teaching approaches to improve communication and emotional regulation.

## Collaborative and Inclusive Practice

The pathway promotes inclusive environments by helping staff understand neurodiversity and implement tailored interventions.

Click here to access: [Social Communication Pathway Padlet](#)



# Targeted Support Initiatives

## **Flying Start Inclusion Service**

Flying Start is a targeted early years inclusion service for a defined group of schools and settings in the most disadvantaged areas of our city. Schools and settings have access to training, advice and direct delivery from SaLTs, Language Development Workers, Occupational Therapy, Health Visiting, Educational Psychology and Early Years Outreach to build the capacity of staff in meeting SLCN, SEMH, sensory and developmental needs of children and supporting families.

## **Neurodiversity in Schools Programme**

The Neurodiversity in Schools Programme supports neurodivergent pupils in mainstream schools through staff training, parent/carer groups, and inclusive practices. The programme includes PINS for primary schools and NIS for secondary schools, and focuses on improving relationships, understanding, and support for pupils with conditions such as autism, ADHD, dyslexia, and other neurodivergent profiles.

