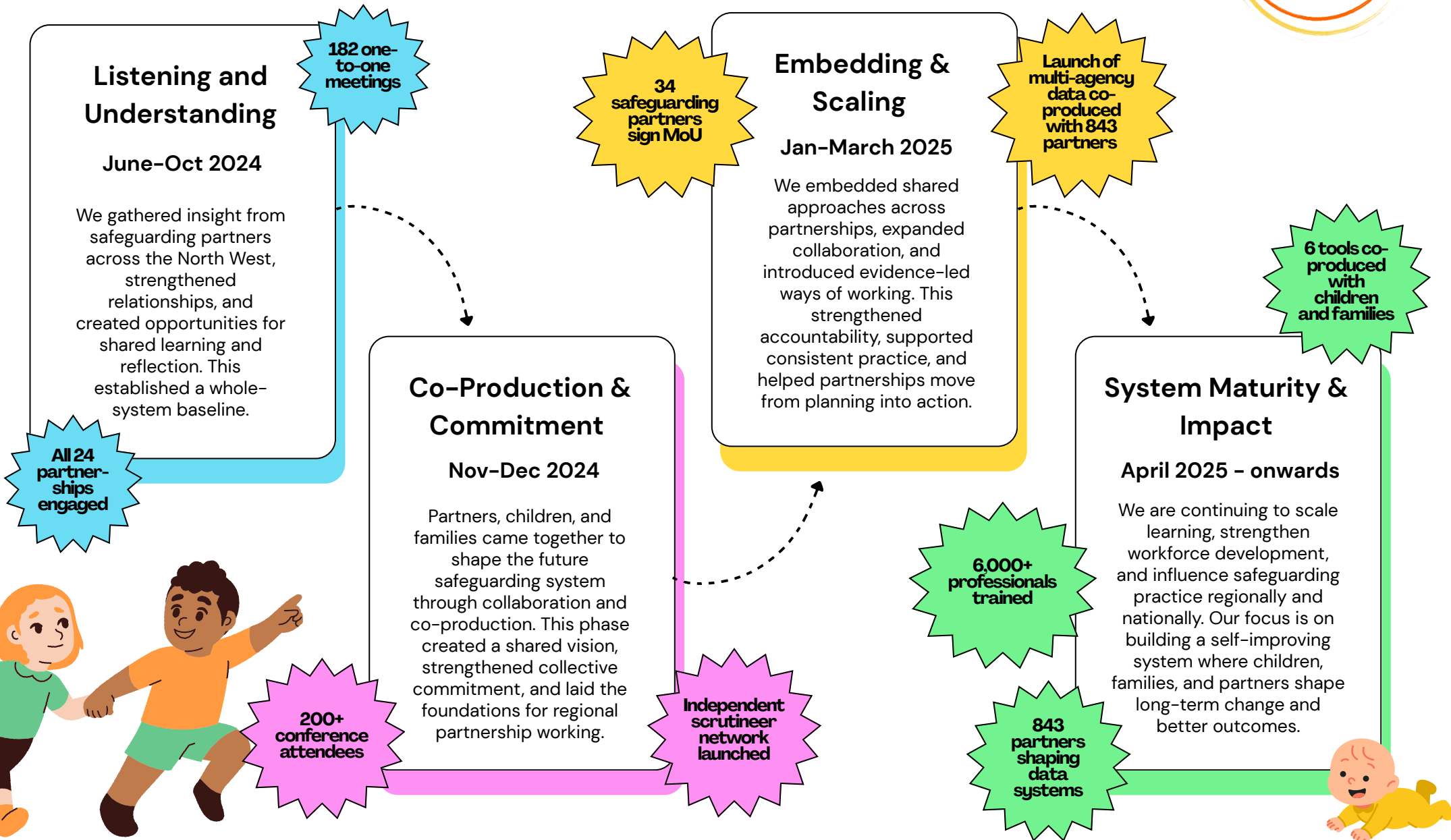


Journey to System Impact (2024-2026)

North West Safeguarding Partnership



Journey to System Impact (2024-2026)

North West Safeguarding Partnership



1. Listening and Understanding

June - Oct 2024

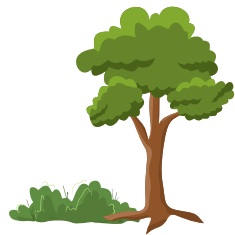
- 182 one-to-one meetings
- All 24 partnerships engaged
- Whole-system baseline established
- Early alignment across NW partnerships



2. Co-Production & Commitment

Nov - Dec 2024

- 200+ conference attendees (inc. children and families)
- Independent scrutineer network launched
- Shared vision established
- Children, families and partners shaping system design



3. Embedding & Scaling

Jan - March 2025

- 34 safeguarding partners sign MoU
- Launch of multi-agency data co-produced with 843 partners
- Shift to evidence-led decision making
- Stronger accountability across partnerships



4. System Maturity & Impact

April 2025 - onwards

- 3,000+ attended CSA webinars
- 6,000+ professionals trained
- 843 partners shaping data systems
- 6 co-produced tools with children and families
- 27 new products for the region
- Improved practice quality
- Stronger assurance systems
- Region shaping national safeguarding practice



Building a connected, evidence-driven safeguarding system, improving outcomes for children and families

700+ → 6,000+ professionals trained ● **24 MASAs supported consistently** ● **Always family-first**